

# Open LMS Mobile App

Access Exceptional Learning Experiences on the Go

**The Open LMS mobile application, based on Moodle, is now available, with all the key components to make your LMS come alive on any mobile device. Expect continuous updates and enhancements that will elevate your mobile LMS experience.**

Discover an enhanced Moodle experience, completely dedicated to your unique Open LMS platform. Obtain unlimited access to Moodle HQ features, including:

- **Course content and activities**
- **Internal messaging service, including the ability to call or contact course participants**
- **Calendar**
- **Grade book**
- **File management, including uploading images, audio, video, and other files directly from the mobile device**
- **Ready-to-use Android and iOS offline content capability**

Additional free features that will take your teaching and learning experiences to a new level:

- **Unlimited access to offline courses (typically capped at two offline courses per device per site)**
- **Push notifications for messages, forums, tasks, and more. Delivery available through our server or your institutional server, according to your need or preference (available on request)**

The Open LMS free app is available on the [Apple App](#) store and [Google Play](#). Suited for institutions with multiple websites (production and sandbox sites).

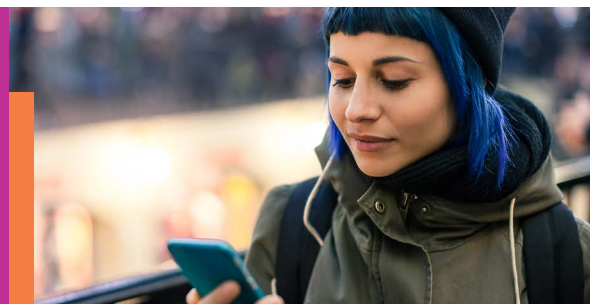
## Brand Match, Open LMS's App Branding Service

Deliver a standalone, custom-designed Open LMS mobile experience with access to a full app branding service that allows you to extend the unique brand of your institution, school, or organization, ensuring consistency across your Open LMS web and mobile apps.\*

We take the power of the official Moodle mobile app and customize it based on your institution's unique branding. With Brand Match, you'll receive:

- **Your own LMS app on iOS and Google stores**
- **A customized teaching and learning experience on the go with your institution's full branding**
- **The ability to make the user experience the same on your Open LMS website and mobile app**
- **Mobile notifications sent to users**
- **Direct access to your platform with a unique URL, making it easy for faculty and students to access the platform with just one click**

\*Brand Match services available at an additional cost.



**Contact us** for more information or **click here to find out more about the Brand Match experience.**